



SPINOLOGICS

Leading the development of improved spinal care™



CONCEPT

DESIGN

PRACTICE

SPINOLOGICS

spinologics.com

545 Crémazie Est, Office 630

Montreal

Quebec, Canada

H2M 2V1

DESIGN TEAM AND FOUNDERS

Hubert Labelle, M.D.

Full Professor, Department of Surgery, Faculty of Medicine, University of Montreal
Orthopedic surgeon, CHU Sainte-Justine University Hospital.

Stefan Parent, M.D., Ph.D.

Associate Professor, Department of Surgery, Faculty of Medicine, University of Montreal
Orthopedic surgeon, CHU Sainte-Justine University Hospital
Orthopedic surgeon, Hopital du Sacre-Cœur de Montreal

Jean-Marc Mac-Thiong, M.D., Ph.D.

Assistant Professor, Department of Surgery, Faculty of Medicine, University of Montreal
Orthopedic surgeon, Hopital du Sacre-Cœur de Montreal
Orthopedic surgeon, CHU Sainte-Justine University Hospital

Mark Driscoll, P.Eng., Ph.D.

Active member, Order of Engineers of Quebec
Active member, Intellectual Property Institute of Canada

INTRODUCTION

The **CERVISION** system is the first and only positioning system to couple the movement of the patients shoulders and arms. This advantageously provides the unique ability to safely and comfortably position a patients upper limbs as desired. The **CERVISION** system is fully adjustable to all patients and installs easily on all operating tables. The **CERVISION** system works with anterior or posterior positioning and will always provide consistent and accurate x-rays of the cervical spine, precluding the need for delays and repeat x-rays.

Optimize and simplify your cervical spine surgery with the **CERVISION**

Indication for use: The **CERVISION** is designed to provide caudal retraction of the shoulders and to support and locate patient arms during spinal and neck procedures.

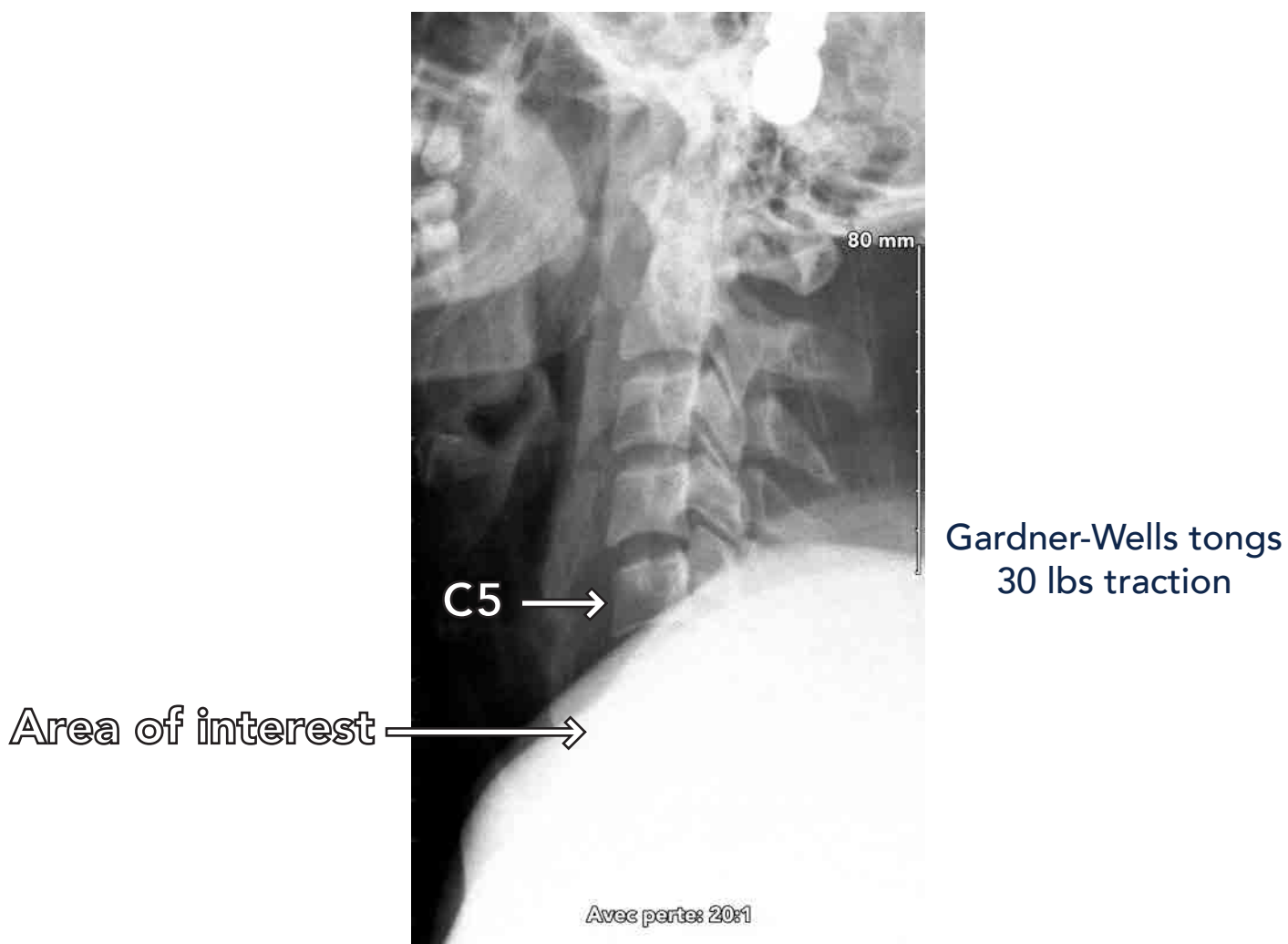
CERVISION

Optimize and simplify your cervical spine surgery

CLINICAL NEED

Current methods of positioning patients arms during cervical procedures are crude, time consuming, insufficient, and consequently costly to the establishment.

Arms must be drawn caudally and supported adjacent to patient to effectively expose the cervical spine



CERVISION

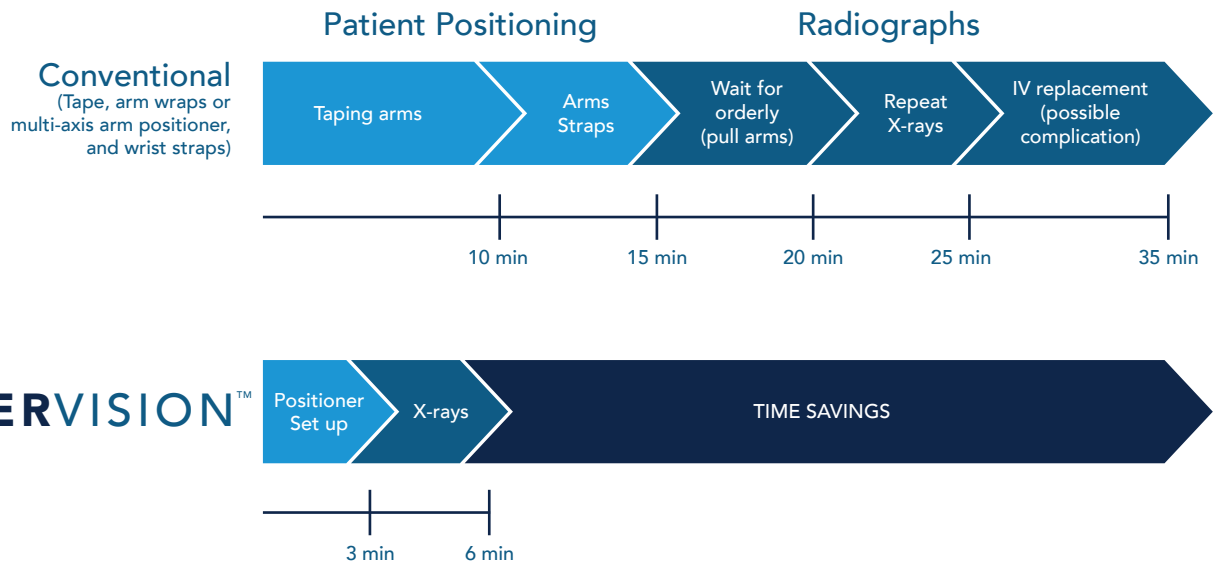
Optimize and simplify your cervical spine surgery



Anterior position



Posterior position



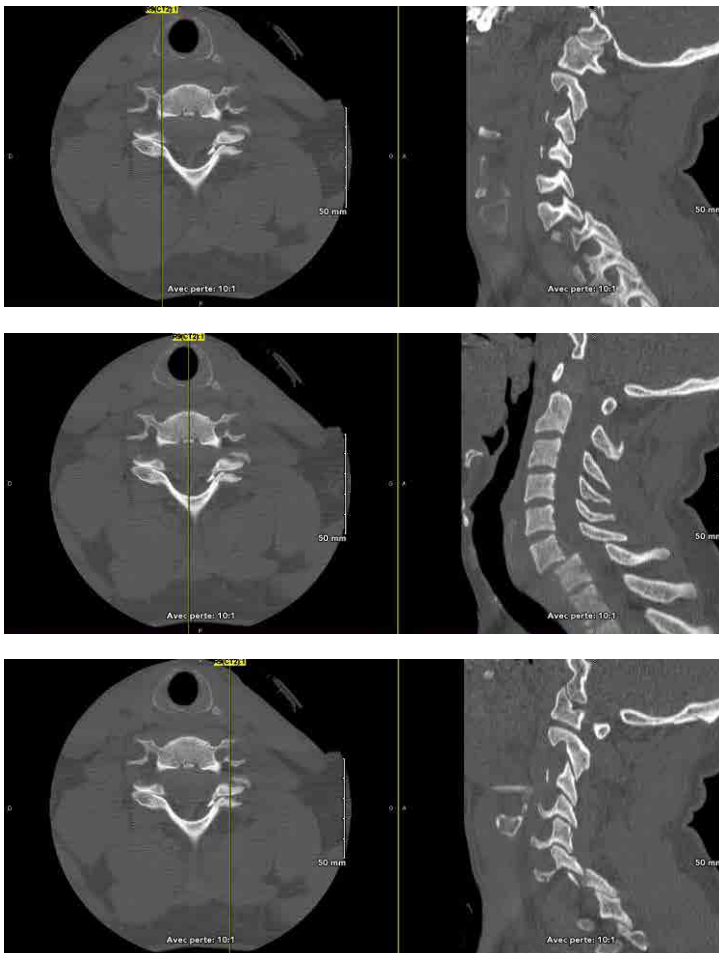
CERVISION

Optimize and simplify your cervical spine surgery

Case example

- 30 yo male
- Motor vehicle accident
- C6-C7 fracture-dislocation
- Complete C6 tetraplegia

Preoperative CT scan

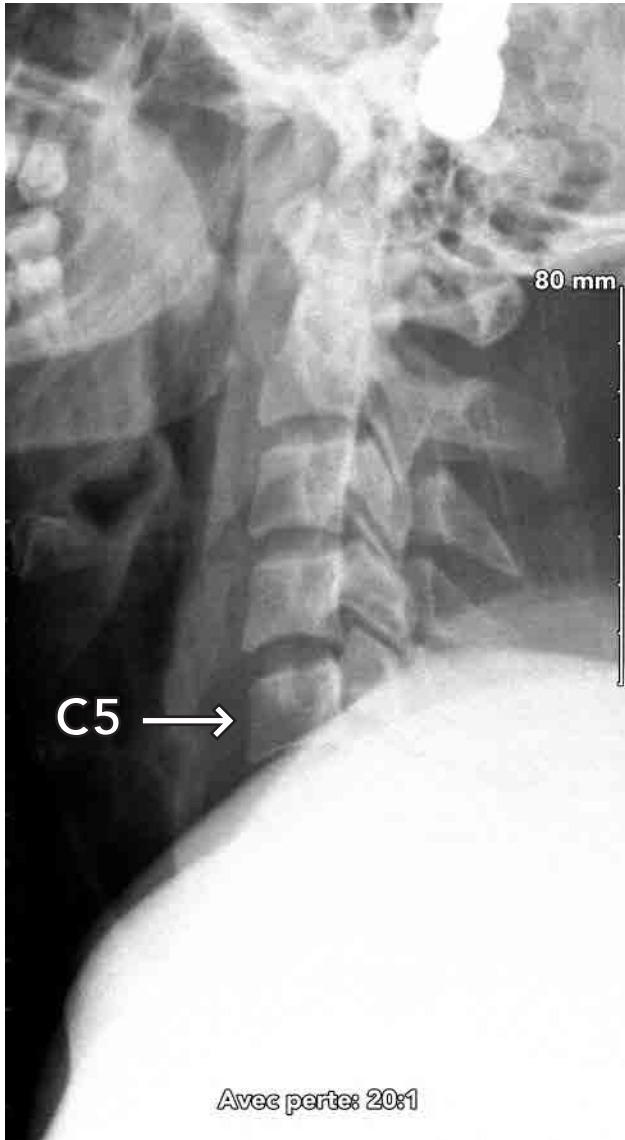


Preoperative MRI



CERVISION

Optimize and simplify your cervical spine surgery



Gardner-Wells tongs
30 lbs traction



Gardner-Wells tongs
30 lbs traction
+
CERVISION™

CERVISION INSTALLATION INSTRUCTIONS

STEP 1: Attach buckle to base of operating table



May be attached anywhere level with or below patient's shoulders (as made possible by the buckle)

STEP 2: Place arm cover under arm



Respect table and arm direction as indicated inside

STEP 3: Fold arrow 1



Respect table and arm direction as indicated inside

CERVISION INSTALLATION INSTRUCTIONS

STEP 4: Enclosing the arm

Anterior position



Posterior position



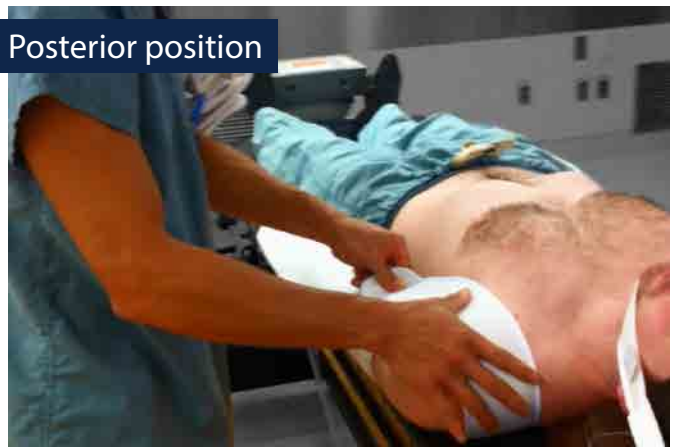
Secure arms while allowing IVs sufficient room

STEP 5: Enclosing the shoulder

Anterior position



Posterior position



Firmly press all Velcro connections (note that neck strap to be placed under the patient may be already positioned beneath patient as observed here)

STEP 6: Repeat for 2nd arm

Anterior position



Posterior position



CERVISION INSTALLATION INSTRUCTIONS

STEP 7 and 8: Place front and back neck straps

Anterior position



Posterior position



Front and back neck straps serve to stop the shoulder straps from moving laterally. Position and adjust accordingly.

*Note: some prefer to position the back neck strap before installing the second cover and then secure it prior to enveloping the arm. Alternatively, the arm covers and the back neck strap may be positioned prior to placing the patient on the table.



STEP 9: Place arm strap maintaining the iliac crest exposed

Anterior position



Posterior position



*Note: Arm strap serves to maintain the position of the arms (stops lateral movement)

CERVISION INSTALLATION INSTRUCTIONS

STEP 10 (optional): Place chin strap



The installation guidelines are the same whether the patient is prone or supine.

STEP 11: Anterior and posterior positions – leave straps accessible for adjustment during surgery



To increase tension pull straps



To reduce tension lift tensioner



Arterial lines are easily accessible, protected, and remain uncompromised during positioning.



CERVISION

Optimize and simplify your cervical spine surgery

METHOD	CONVENTIONAL (Tape, arm wraps or multi-axis arm positioner, and wrist straps)	CERVISION
Set up	10 minutes	3 minutes
Adjustment for x-ray	3-5 minutes (must wait for orderly)	None
Problems and complications	Tape burn, tape tear or non-adherence	None
	Insufficiently draws shoulders caudally	
	Limited access to arm after positioning	
	Occluded IVs or arterial lines	
	Exposes orderly to radiation	
	Jeopardizes sterile environment	
	Inconsistent control of traction (repeat x-rays required)	
	Need for arm board or support (cumbersome for surgeons and C-arm)	
Total cost/case	\$535-915	-
Material cost	\$15	-
OR cost (\$40-60/minute)	\$520-900	-

CERVISION

Optimize and simplify your cervical spine surgery

RESULTS OF CLINICAL TESTING:

The CERVISION is a simple and effective apparatus to comfortably position and maintain a patient's shoulders and arms.

1. Reduces surgery time
2. Works with anterior or posterior positioning
3. Provides consistent and accurate x-rays of the cervical spine
4. Precludes need for repeat x-rays
5. Improves working proximity to patient
6. Installs safely and easily on all hospital beds
7. Conforms seamlessly to surgical environment
(IVs, EKG leads, and reveals iliac crest for possible autograph)
8. Intraoperative adjustability
9. Improves patient comfort
10. Disposable



SPINOLOGICS

Leading the development of improved spinal care™

For more information and to place an
order please contact Spinologics Inc.
1-888-988-2747

SPINOLOGICS

spinologics.com

545 Crémazie Est, Office 630

Montreal

Quebec, Canada

H2M 2V1